



**SAKURA**

# Operating Instructions

**RANGE HOOD**

**SA1000**

**ENGLISH.....P1~P10**

**Français.....P11~P20**

Read and save these instructions

Lire et conserver cette opération instructions.

## INTRODUCTION

### INTRODUCTION

- Thank you for choosing this cooker hood.  
This instruction manual is designed to provide you with all required instructions related to the installation, use and maintenance of the appliance.
- In order to operate the unit correctly and safely, please read this instruction manual carefully before installation and usage.

### SAFETY PRECAUTION

- Never let the children operate the machine.
- The cooker hood is for home use only, not suitable for barbecue, roast shop and other commercial purpose.
- Clean the cooker hood after the specified time (suggestion: every 2 months) according to the instruction manual and keep the unit from danger of burning. There is a fire risk if cleaning is not carried out in accordance with the instructions.
- Please keep the kitchen room with good convection before connecting this appliance; please check that the power supply cord is undamaged. A damaged supply cord must be replaced by qualified service personnel only.
- Regulations concerning the discharge of air have to be fulfilled.
- This appliance can be used by children aged from 8 years and above and also the persons with reduced physical, sensory or mental capabilities or lack of experience and knowledge if they have been given supervision or instruction concerning use of the appliance in a safe way and understand the hazards involved. Children shall not play with the appliance. Cleaning and user maintenance shall not be made by children without supervision.
- If the supply cord is damaged, it must be replaced by the manufacturer, its service agent or similarly qualified persons in order to avoid a hazard.
- There shall be adequate ventilation of the room when the range hood is used at the same time as appliances burning gas or other fuels; the range hood is only intended to be installed over a hob with no more than four hob elements; The air must not be discharged into a flue that is used for exhausting fumes from appliances burning gas or other fuels;

Range hoods and other cooking fume extractors may adversely affect the safe operation of appliances burning gas or other fuels (including those in other rooms) due to back flow of combustion gases.

These gases can potentially result in carbon monoxide poisoning.

After installation of a range hood or other cooking fume extractor, the operation of flued gas appliances should be tested by a competent person to ensure that back flow of combustion gases does not occur.

### CAUTION:

Accessible parts may become hot when used with cooking appliance.

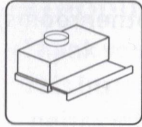
#### Electrical Shock Hazard

Only plug this unit into a properly earthed outlet.

If you have doubts, seek advice from a suitably qualified engineer.

- Lamp type: L12;
- Shape description: round;
- Rated wattage of the intended lamp: 1.5W;
- Max wattage of a potential replacement lamp: 1.5W;
- Rated voltage or voltage range replacement detail: 110~240V.

## Hardware Included



x6  
ST4 x 30

x6  
φ5 x φ8

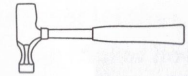
## Tools Required



Pencil



Measuring tape



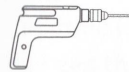
Hammer



Screwdriver



Level

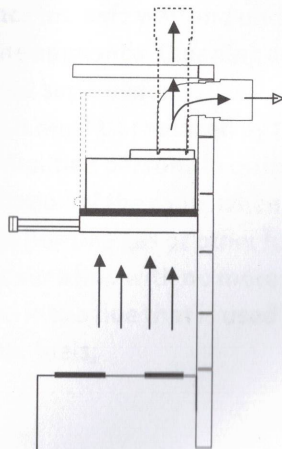


Electric drill or  
powered screwdriver

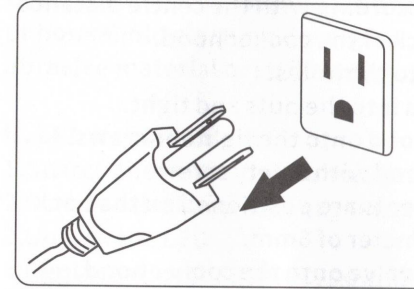
## INSTALLATION INSTRUCTION

### Prepare for installation:

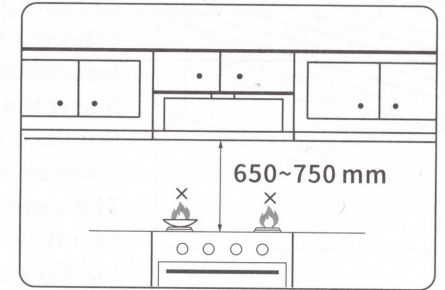
**Warning:** Failure to install the screws or fix device in accordance with these instructions may result in electrical hazards.



a. If you have an outlet to the outside, your cooker hood can be connected as above picture by means of a pipe (with an interior diameter of 150mm). If you don't have an outlet to the outside, you can go with recirculation mode by using carbon filter.



b. Before installation, turn the unit off and unplug it from the outlet.



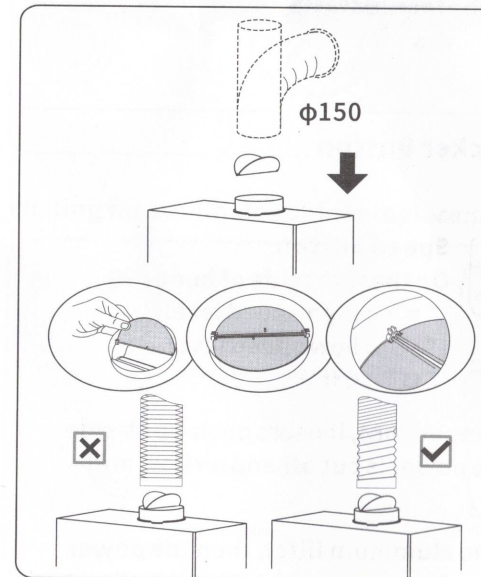
c. The cooker hood should be placed at a distance of 650~750 mm above the cooktop for the best effect.



Note

Do not flame under the range hood.

## AIR OUTLET INSTALLATION METHOD



**Installation method for 150mm diameter pipe:** insert the one-way valve as the pic and fix the pipe.

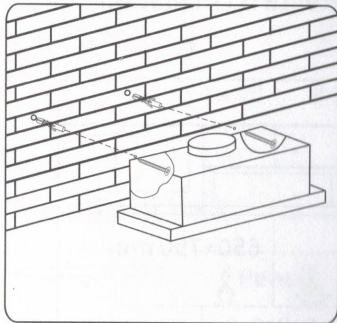
**Attention:** The bump of the one-way valve must be upward.

The pipe near the air outlet need to be fully extended.

**Remark:** Aluminum pipe is optional purchase.

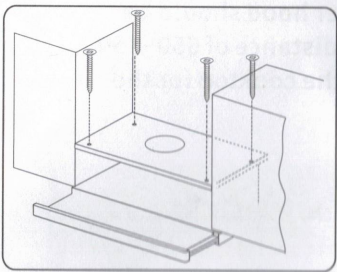
## TELESCOPIC MODEL INSTALLATION

### Two methods for installation (A&B)



#### Methods A:

To install onto the wall drill 2 holes of  $\phi 8\text{mm}$  on a suitable place according with the centre distance of hole in the back of the cooker hood.  
Insert the nut into the holes.  
Insert the screws into the nuts and tight.  
Put the cooker hood onto the tighten screws.  
Fix the cooker hood with safety screw.  
The two safety vents are positioned on the back casing, with diameter of 6mm.  
Put the one way valve onto the cooker hood.



#### Methods B:

Drill 4 holes of 6mm diameter at the bottom Of the hanging cupboard .  
Put the one way valve on the cooker hood, then install the cooker hood on the bottom of the hanging cupboard, tighten the hood with enclosed 4 screws.



Note

1. The extensible pipe are optional accessory, not supplied.
2. Take off protection film before installation.

## OPERATION

### Mechanical Rocker Button

It just appear in TELESCOPIC MODEL.



Light button

On the left side of hood.



Speed button

On the right side of hood.

“=” : high speed level.

“- ” : Low speed level.

“O” : Off

#### Remark:

Under operational situation (rocker buttons are on), if users push front-side aluminum filter back to machine, then the power is cut off and airflow and illumination are turned off automatically .

(Rocker buttons are on) If users pull out the aluminum filter, then the power is on and airflow and illumination are turned on to operate automatically.

## MAINTENANCE

Before cleaning,switch the unit off and pull out the plug.

### I. Regular Cleaning

Use a soft cloth moistened with hand-warm mildly soapy water or household cleaning detergent. Never use metal pads, chemical, abrasive material or stiff brush to clean the unit.

### II. LED Replacement

1. Switch the unit off and unplug the appliance.
2. Remove the lamp cover by unscrewing the 2 screws.
3. Unlock the LED
4. Replace with the same type and rated lamp

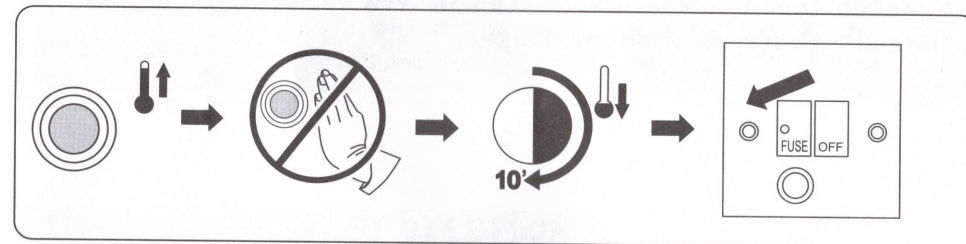
- Lamp type: L12;

- Shape description: round;

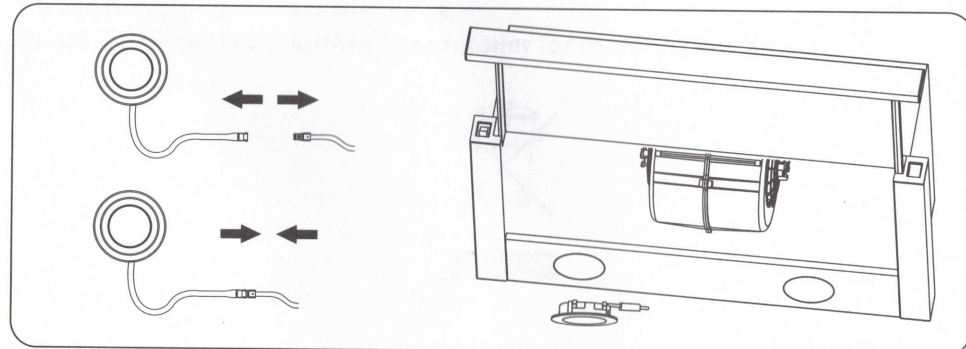
- Rated wattage of the intended lamp: 1.5W;

- Max wattage of a potential replacement lamp: 1.5W;

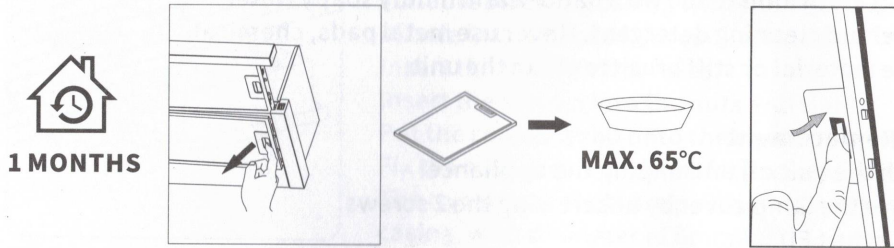
- Rated voltage or voltage range replacement detail: 110~240V.



Waiting for 10 minutes before replacement.



### III. Aluminium filters replacement



#### Aluminium filters:

To avoid fires, clean thoroughly once a month. To do so, remove the filters and soak in hot water and detergent for an hour. If using a dishwasher, position the filters vertically to improve the cleaning process.

#### Important Notice:

**Make sure the filter is securely locked. Otherwise, it would loosen and cause abnormal noise and danger.**

### TROUBLE-SHOOTING

Fault	Cause	Solution
Light on, but fan does not work	The fan blade is jammed.	Switch off the unit and repair by qualified service personnel only.
	The motor is damaged.	
Both light and fan do not work	Light bulb burn.	Replace the LED light with correct rating.
	Power cord is loose.	Plug into the power supply again.
Serious Vibration of the unit	The fan blade is damaged.	Switch of the unit and repair by qualified service personnel only.
	The fan motor is not fixed tightly.	
	The unit is not hung properly on the bracket.	Take down the unit and check whether the bracket is in proper location.
Suction performance not good	Too far distance between the unit and the cooktop.	Readjust the distance between 650-750mm.

### ENVIRONMENTAL PROTECTION

Waste electrical products should not be disposed of with household waste. Please recycle where facilities exist. Check with your Local Authority or retailer for recycling advice.



## SPECIFICATION

Model	SA1000
Product Dimension	23.4"x 11.1"x 10.3"
Weight (N.W/G.W)	7.6/9.6KG
Filter	3-Layer Aluminum Filter x 2PCS
Switch	Rocker Switch
Rated Voltage/Rated Frequency	120V~/60Hz
Motor Type	AC Single Motor
Air Outlet Diameter	φ 6"
Illumination	Round LED 1.5W x 2PCS
Motor Power Consumption	190±10%W

## CONTENT

INTRODUCTION .....	12-14
MESURE DE SÉCURITÉ.....	12-14
INSTRUCTIONS D' INSTALLATION .....	14
INSTALLATION DE LA SORTIE D' AIR.....	15
INSTALLATION DU MODÈLE TÉLESCOPIQUE.....	16
OPÉRATION .....	16
MAINTENANCE .....	17-18
DÉPANNAGE.....	19
PROTECTION DE L' ENVIRONNEMENT .....	19
SPÉCIFICATION.....	20
SCHÉMA CÂBLAG .....	20

## WIRING DIAGRAM

